



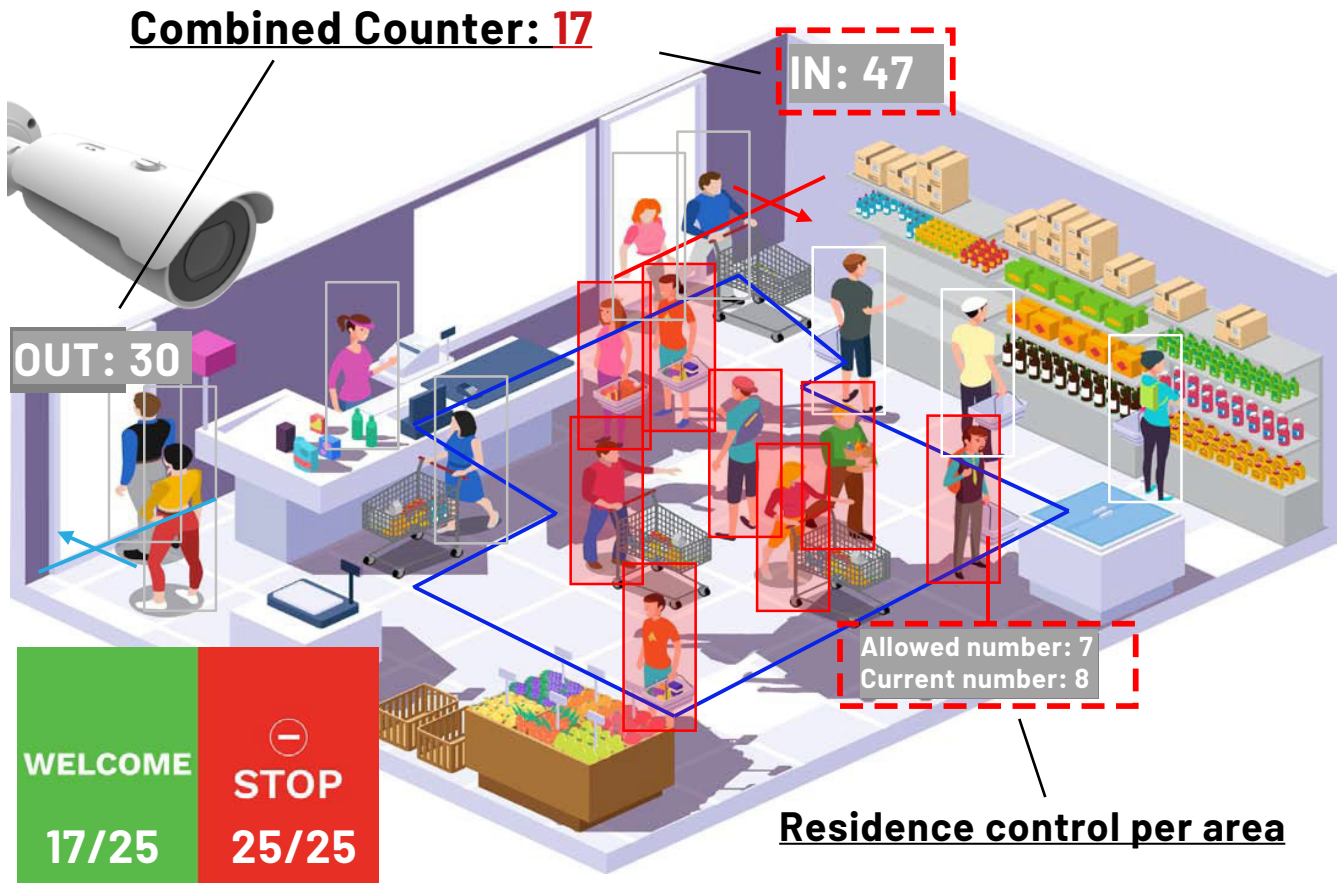
# AI BOX

**Social distancing with  
GANZ AI BOX**

Artificial intelligence  
**intelligence**  
CBC GROUP

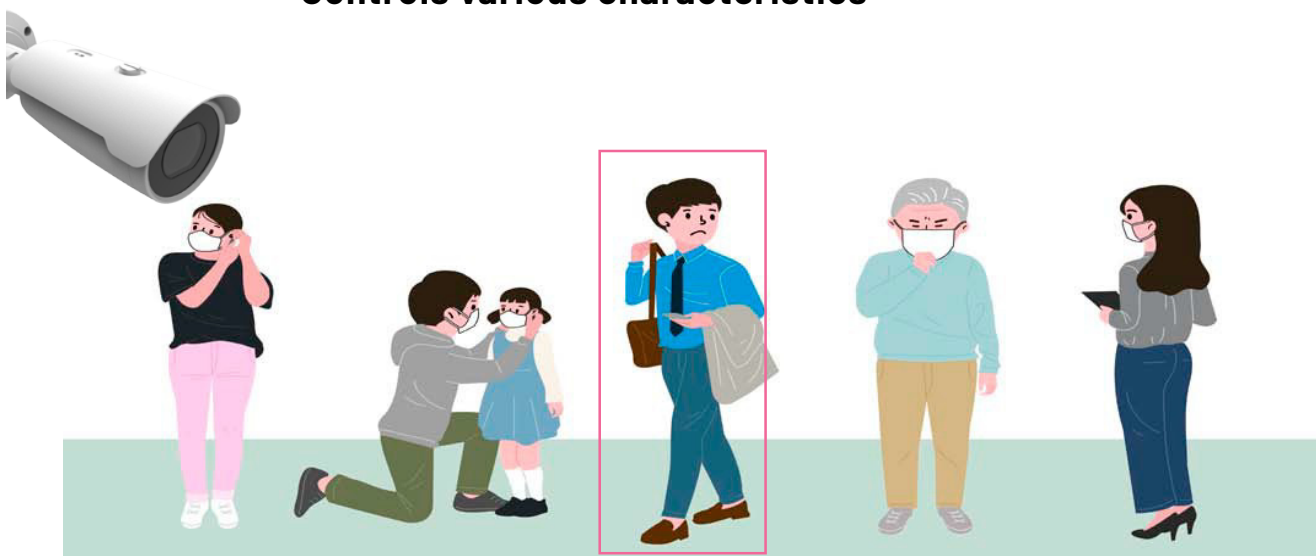
## CONTROL OF THE PERMITTED NUMBER OF PERSONS

- People count when entering / leaving
- Combined counting
- Presence: How many people are present in a certain area



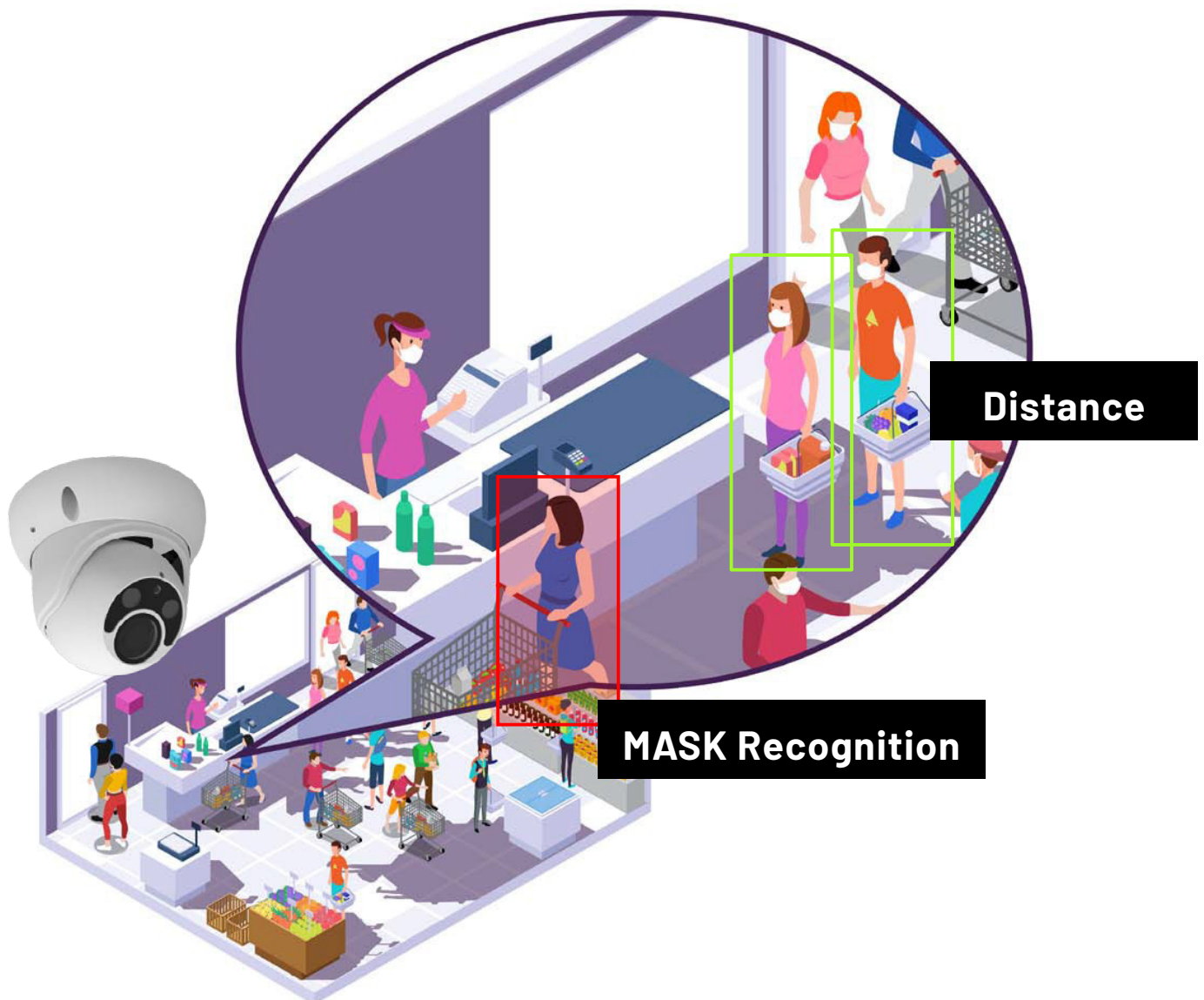
## MASK-CONTROL

- Based on face recognition
- Controls various characteristics



## CONTROL IN THE CASH AREA

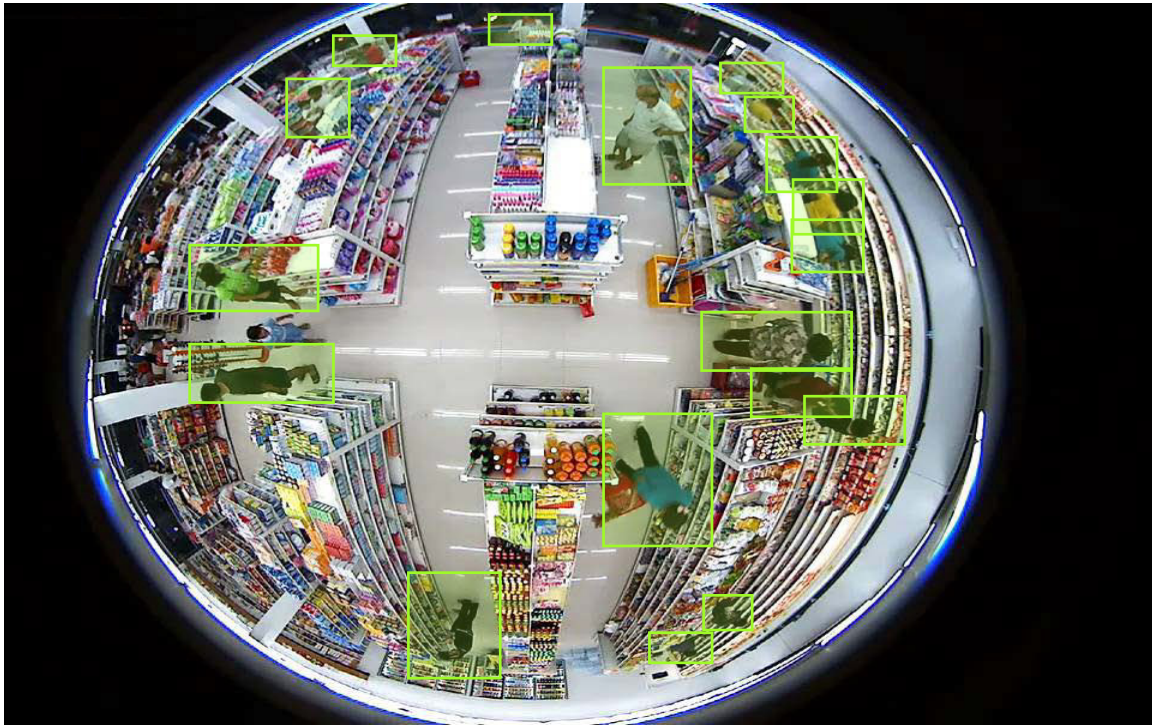
- Object distance alarm
- Mask recognition (based on face recognition)





## OBJECT CLASSIFICATION & DETECTION WITH FISHEYE-CAMERA

- Checking the presence of persons

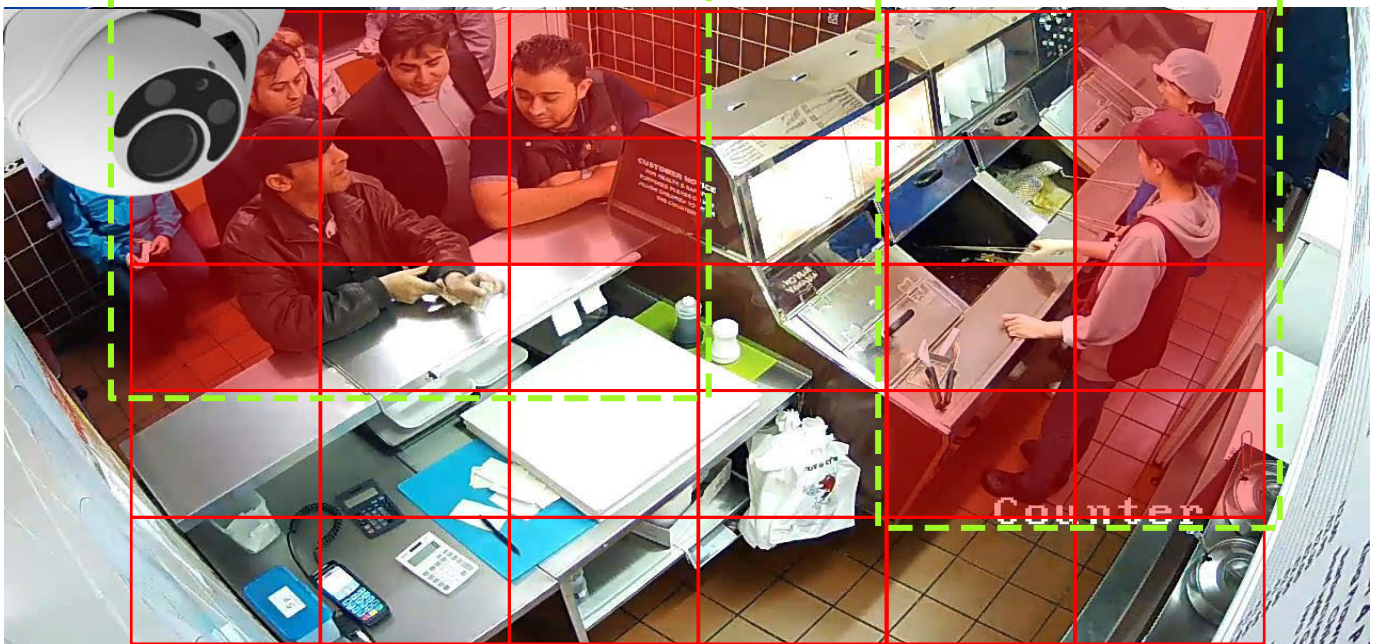


## OBJECT CLASSIFICATION & DISTANCE

- Control of the distances between persons



**ALARM**



## AI BOX: OVERVIEW OF FUNCTIONS

- Object Classification
- Object tracking
- Behavioural Recognition
- Face recognition
- License plate recognition
- Individual adaptation

## EXAMPLE RULE

If there are more than 10 people in the shop:

➔ Action close entrance door

If there are less than 10 people in the shop

➔ Action Open store entrance door

By using the AI-based rules for counting people, multiple counters can be combined. The overall result then triggers the corresponding action.

## ADVANTAGES



1. Using the basic functions of the AI box
2. Easy adjustment: no calibration required for the classification of objects
3. Multiple rules with maximum flexibility
4. No special cameras required
5. Connectivity with existing systems





**CBC GROUP**

**CBC (Europe) GmbH**

**+49(0)211 530 67 0**

**info@cbc-europe.com**

**cbc-cctv.com**

*Artificial intelligence*