

Small and Versatile: 1/3-inch Full-HD MOS Integrated Pan-Tilt/Cameras with Production Quality HD/SD Video

HD Integrated Camera
AW-HE50S [SDI Model]
Available June 2010

HD Integrated Camera
AW-HE50H [HDMI Model]
Available June 2010

Wireless Remote Control (option)
*Two AA size batteries required
(batteries not included)

HD 1080/50i, 720/50p
SD 576/50i



■AW-HE50 Main Specifications		AW-HE50S (SDI Model)	AW-HE50H (HDMI Model)
Image Elements		1/3-inch Full-HD MOS	
Lens		18x HD Zoom Lens F1.6 to 2.8 (f=4.7 to 84.6 mm, 35 mm conversion: 36.9 mm to 664.5 mm)	
Focus		Auto/Manual switchable	
Horizontal Resolution		850 TV Lines (Center)	
Minimum Illumination		3 lx (50 IRE, F1.6, +36 dB)	
S/N		54 dB	
Gain Selection		0.3, 0.6, 1.2, 1.5, 1.8 dB/AGC	
Shutter Speed		0 dB, 6 dB, 12 dB, 18 dB (Integral mode) Step 1/100, 1/250, 1/500, 1/1000, 1/2000, 1/4000, 1/10000	
Gamma		OFF, Low, Mid, High, Cinema	
White Balance		AWB A, AWB B, ATW	
Variable Chroma Levels		7 levels	
Scene Files		Full-Auto, Manual	
Color Bar		Full-Bar	
Output Format		HD: 1080/50i, 720/50p SD: 576/50i	HD/HDMI HD/SD analog component* Composite*
Video Output		HD/SD-SDI HD/SD analog component* Composite*	HD/HDMI HD/SD analog component* Composite*
Interface	LAN RS-422	10BASE-T/100BASE-TX, IPv4 AW-series protocol, plus selected third-party support*	
Synchronization System		Internal/External synchronization (BBS)	Internal synchronization
Rotation Range		Pan: -175 to +175 degrees, Tilt: -30 to +90 degrees	
Rotation Speed		Over 90 °/s (at maximum)	
Noise		NC35 (Moving normally), NC40 (When Preset recalled)	
Stopping Accuracy		PAN/Tilt ±0.3 °	
Power Supply		DC12 V ±10 %, 1.3 A	DC12 V ±10 %, 1.3 A
Operating Temperature		0 °C to +40 °C	
Operating Humidity		20 % to 90 % (no condensation)	
Dimensions (W x H x D)		160 mm x 178 mm x 166 mm [TBD] (excluding the cable cover and mounting brackets)	
Weight		Approx. 1.4 kg	
Standard Accessories		Mounting bracket (for table or ceiling), mounting bracket (for main unit), mounting screws, AC adaptor, power cable, cable cover	

*Be sure to use the included AC adaptor and power cable. *Breakout Cable required.

■AW-HS50 Main Specifications		BKGD	Wipe/DVE pattern	Wipe x 13
Video Format	HD (1080/59.94i, 1080/50i, 1080/23.98PsF, 1080/24PsF, 720/59.94p, 720/50p) SD (480/59.94i, 576/50i)	FTB	Selectable Materials	Black, White, CBGD, FMEM1, FMEM2
Video Processing	Y/Cb/Cr, 4:2:2 10 bit (8 bit for FMEM)	KEYER	Number of Keys	1
M/E	1 M/E		Key Type	Linear key, Luminance key, Chroma key
Video Input	Standard: 4 SDI inputs (SDI-IN 1 to 4) Standard: 1 DVI-D output (DVI-IN) XGA (1024 x 768), WXGA (1280 x 768), SXGA (1280 x 1024), WSXGA+ (1680 x 1050), UXGA (1600 x 1200), WUXGA (1920 x 1200) Vertical frequency: 60 Hz 1080/50p, 1080/59.94p	PinP	Transition Type	Mix
Video Output	Standard: 2 SDI outputs (SDI-OUT1 to 2 each, 2 output distribution for SDI-OUT1) Standard: 1 DVI-D output (DVI-OUT) XGA (1024 x 768), WXGA (1280 x 768), SXGA (1280 x 1024), WSXGA+ (1680 x 1050), UXGA (1600 x 1200), WUXGA (1920 x 1200) Vertical frequency: 60 Hz 1080/50p, 1080/59.94p	AUX BUS	Number of AUX BUS	1
Frame Memory	2 channels The image data in the Frame Memory is stored even when the power is off. Video processing for the Frame Memory is 8-bit. OSD, Frames, Labels, Tally indications, camera setting information, and Audio Level Meters for MultiViewer are not stored in the Frame Memory. Wipe Reset, PinP Preset Effect Dissolve Function	Input Function	Selectable Materials	SDI-IN1 to 4, DVI-IN, CBGD, BLACK, FMEM1, FMEM2, PGM, P_W, KOUT, CLN, MV
Memory Function			BUS Transition	Yes (Mix)
Interface	LAN TALLY/GPI	Output Function	Frame Synchronizer	SDI-IN1 to 4, DVI-IN (DVI-IN is always-on)
Power Supply	10BASE-T/100BASE-TX (for IP control) GPI INPUT x 5 channels GPI OUTPUT x 7 channels		Freeze	SDI-IN1 to 4, DVI-IN
Operating Temperature	DC12 V ±10 %, 2.5 A [TBD]		Dot by Dot	SDI-IN1 to 4
Operating Humidity	0 °C to +40 °C		Video Processing	SDI-IN1 to 4
Dimensions (W x H x D)	10 % to 90 % (no condensation)		Up-converter	SDI-IN3, IN4
Weight	210 mm x 65 mm x 177 mm [TBD] (excluding protrusions)		Single Screen Display	Labels, Tally indication, Split-screen (the screen may be split into 4, 5a/5b, 6a/6b, 9 and 10a/10b sections) MV frames, Labels, Tally indications, camera setting information, and Audio Level Meters are not shown on SDI-OUT1.
Standard Accessories	Approx. 1.4 kg [TBD] (without options) AC adaptor, power cable		MultiViewer	SDI-OUT2, DVI-OUT (unshown on SDI-OUT1) Single Screen Display

*Specifications and functions are subject to change without notice.
*The image on the screen is a composite image. *Composite images, photographs, and illustrations are included for reference use only.

Panasonic

<http://panasonic.net/pss/broad/>

[Countries and Regions]

Argentina	+54 1 308 1610	Italy	+39 02 67 88 449	Russia & CIS	+7 495 980 42 06
Australia	+61 2 9966 7400	Japan	+81 3 5272 980 891	Saudi Arabia	+966 1 465 0709
Austria	+49 (0)611 235 401	Kazakhstan	+7 3272 980 891	Singapore	+65 6270 0110
Bahrain	+973 252292	Korea	+82 2 2106 6666	Slovak Republic	+421 (0)2 52 92 14 23
Belgium	+32 (0)2 481 04 57	Kuwait	+965 481 2123	Slovenia, Croatia, Bosnia, Macedonia	+386 (0)60 26 41
Bulgaria	+359 2 946 0786	Latvia	+371 1 216827	South Africa	+27 11 313 1400
Brazil	+55 11 3889 4035	Malaysia	+60 3 5549 5422	Spain	+34 (93) 425 93 00
Canada	+1 905 624 5010	Mexico	+52 5 488 1000	Sweden	+46 (8) 680 26 41
China	+86 10 6515 8828	Montenegro, Serbia	+381 21 662 25 20	Switzerland	+41 (0)20 76 63 36 57
Hong Kong	+852 2313 9888	Netherlands	+31 73 64 02 577	Taiwan	+886 2 2227 6100
Czech Republic	+420 236 032 552/511	New Zealand	+64 9 272 0100	Thailand	+66 2 731 8888
Denmark	+45 43 20 08 57	Norway	+47 67 91 78 00	Turkey	+90 216 518 3700
Finland, Latvia, Lithuania, Estonia	+358 (9)521 52 53	Pakistan	+92 5370320 21	U.A.E.	+971 4 282201
France	+33 (0)1 49 46 43 59	Panama	+507 229 2955	Ukraine	+380 44 4903437
Germany	+49 (0)611 235 401	Peru	+51 145 29470	Puerto Rico	+1 809 528 8601
Greece	+30 210 96 92 300	Philippines	+63 2 633 5162		
Hungary	+36 (1)382 60 60	Poland	+48 (22)338 1100		
Indonesia	+62 21 385 9449	Portugal	+351 21 425 77 04		
Iran	+98 212 2271463	Romania	+40 21 11 4855		

Panasonic

ideas for life

PRELIMINARY 50 Hz 4/2010

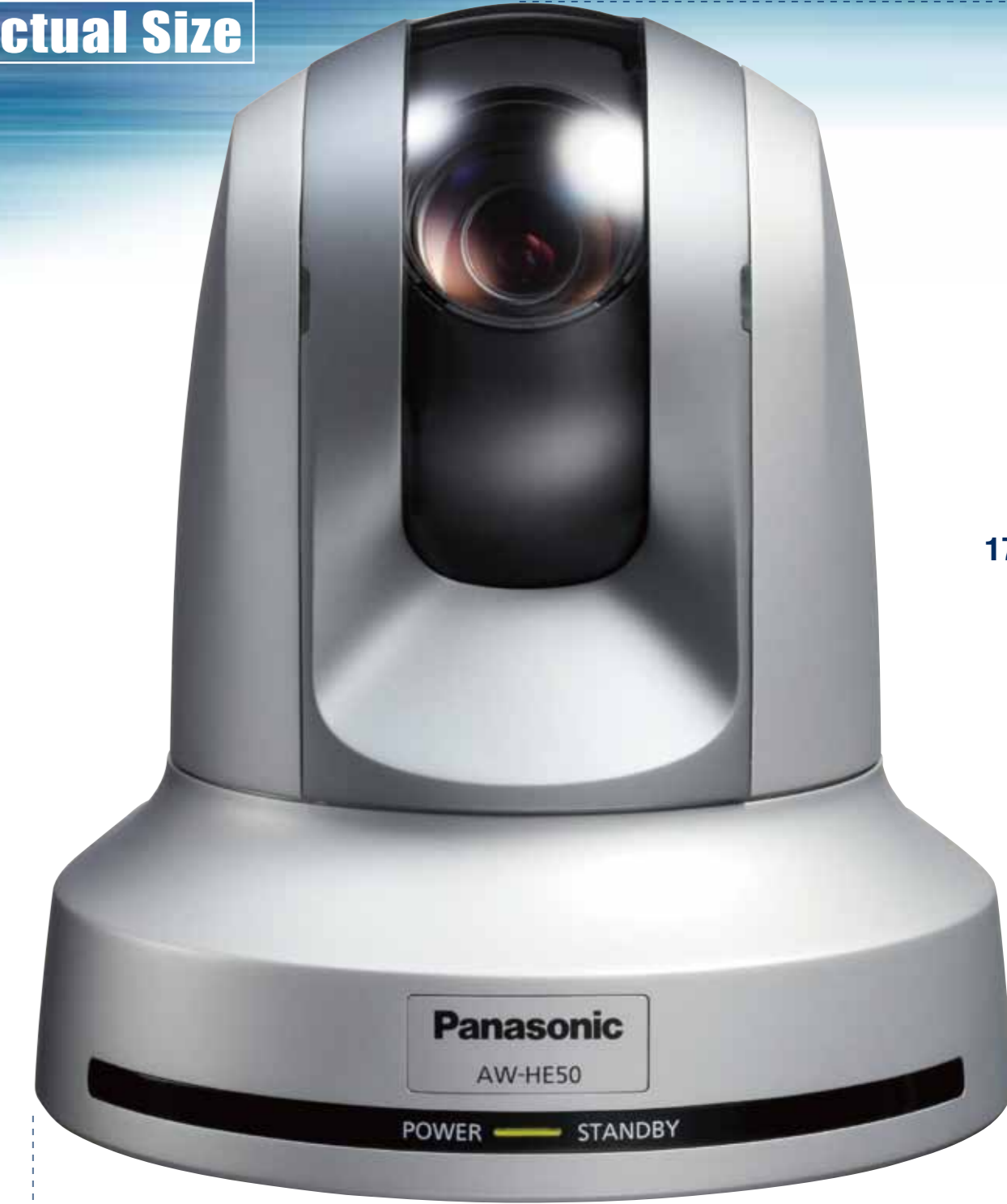
HD Integrated Camera **AW-HE50S/H**
Compact Live Switcher **AW-HS50**
Remote Camera Controller **AW-RP50**

50 Series

The Compact New 50 Series:
Production Quality Video
with IP Network Control



Actual Size



178 mm

160 mm

■Rear
AW-HE50S



AW-HE50H



1/3-inch Full-HD MOS Sensor with 18x HD Optical Zoom & 10x Digital Zoom

Innovative Features Deliver Realistic, Production Quality HD Video

Dynamic Range Stretch (DRS)

The gamma curve and knee slope are optimized to match the contrast of each pixel in real time. This increases the dynamic range without affecting the normal pixels.



DRS OFF: With the iris expanded, this blown highlight appears on the blackboard.
DRS OFF: With the iris contracted, a blocked shadow appears on the figure.
DRS ON: Both highlights and shadows are clearly visible on the blackboard.

The Hybrid (2D/3D) Noise Reduction

The innovative Hybrid (2D/3D) Noise Reduction function also suppresses afterimages, even in difficult lighting conditions.



Without Noise Reduction: Some noise is evident when gain control is turned up.
3D Noise Reduction Alone: Afterimage and some loss of resolution is seen.
The Hybrid (2D/3D) Noise Reduction: Clearer images in difficult conditions.

Flesh Tone Mode

Flesh Tone Mode produces a more pleasing and realistic picture.

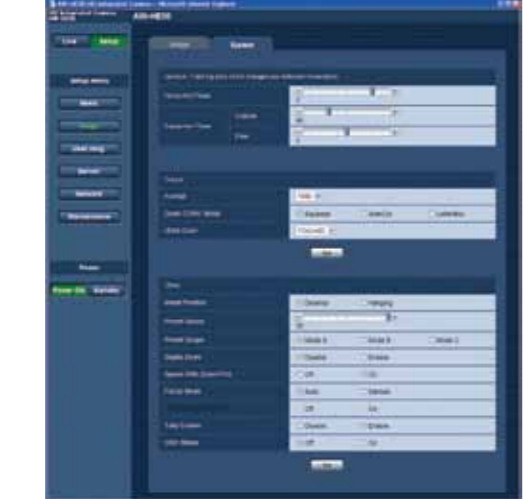


Flesh Tone Mode: OFF **Flesh Tone Mode: ON**

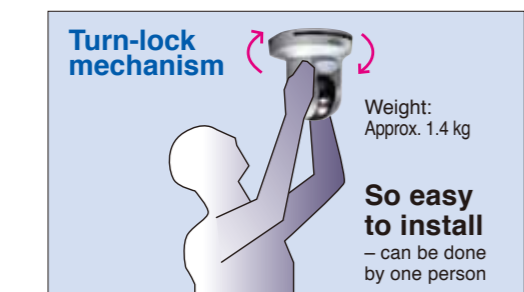
Setting camera menus with a PC

Camera menus can be set up via a web browser by connecting the AW-HE50S/H to a PC.

Configuration window on the web browser



Quick integration, thanks to simple connections, IP control, and included Turn-lock mount



Weight: Approx. 1.4 kg

So easy to install - can be done by one person

AW-JEB50-2

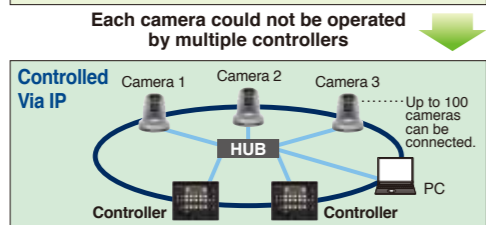
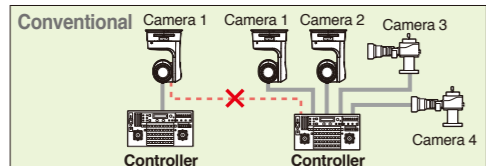
Small and Powerful: An Easy-to-Use Camera Controller with Great Features

Remote Camera Controller
AW-RP50 Available July 2010



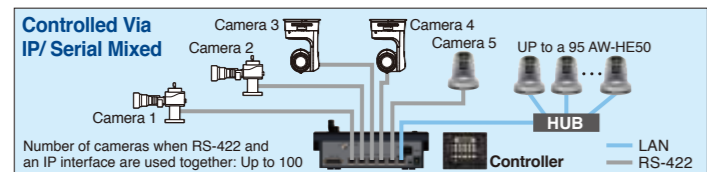
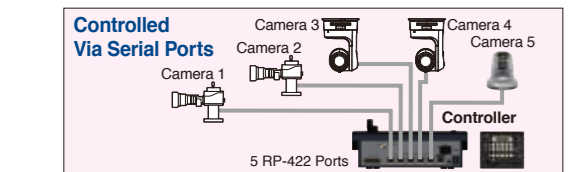
Simple to connect and operate, with both IP and Serial control functions

- Up to a hundred AW-HE50S/H units can be controlled via IP connections when using Ethernet hubs.
- IP addresses are automatically assigned to the AW-HE50S/H or AW-HS50 by the Automatic IP Address Setup function.
- One remote camera can be controlled simultaneously by up to five AW-RP50 units via an IP connection. Various settings for the AW-RP50 can be configured with a PC (configuration software supplied).
- IP-control performance depends on network conditions.
- Video signals cannot be transmitted via IP.



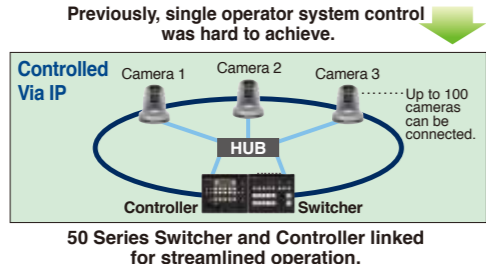
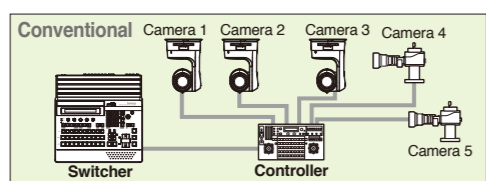
Serial Control also Supported

- Up to 5 existing Panasonic pan-tilt heads*, integrated cameras** and box cameras*** such as the AW-HE50S/H, etc. can be linked using the serial control (RS-422 protocol).



Linking the AW-HS50 to IP control enables highly efficient and stress-free operations

- The camera setting information (such as iris and gain) acquired by the unit is displayed through the AUX output of the switcher or on the split-screen of MultiViewer.
- Acquires the ON AIR tally information of the switcher and lights the tally LED on the panel.
- Bus images can be changed by linking them to the camera selection (control bus targets: AUX, PVW, PinP, KEY-F).
- The switcher's MultiViewer screen can be changed to the camera image full screen with a one-touch button operation.
*Control bus target: AUX only
- Parameters such as the PinP position of the switcher can be changed with the pan/tilt lever.



AW-RP50 Main Specifications			
Remote Camera Control	Protocol	IPv4, RS422 (Panasonic AW series protocol)	
	Connection	Serial : Up to 5 cameras IP : Up to 100 cameras	
Adjustment functions	Interface	Pan/Tilt (Joystick) Zoom (Seesaw Switch), Focus, Iris, Gain, Pedestal, Shutter, Detail/White Balance (Auto, Adjust R/B Gain), Black Balance/Auto, Adjust R/B Pedestal, Switch scene files	
	Operating Temperature	0 °C to 40 °C	
Switcher Control	Connection	IP-1	
	Supported Switcher	AW-HS50	DC IN x 1
Linkage	Camera Send, Tally Receive	Switcher BUS selection	
	Pan/Tilt (Joystick) PinP positioning etc...		
	Power Supply	DC12 V ±10 %, 0.5 A [TBD]	
	Dimensions (W x H x D)	210 mm x 65 mm x 177 mm [TBD] (excluding protrusions)	
	Weight	2.0 kg [TBD] (without options)	
	Standard Accessories	AC adaptor, power cable	

● Be sure to use the included AC adaptor and power cable

Full rack size with the AW-RP50 and AW-HS50 positioned alongside each other



Small and Professional: A High-Performance HD/SD Live Switcher with Built-in MultiViewer

Compact Live Switcher
AW-HS50 Available July 2010



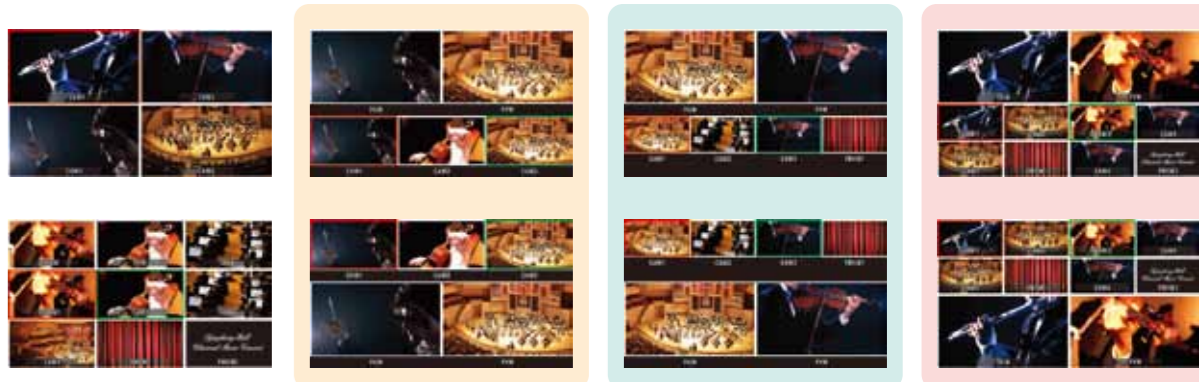
5 inputs and 3 outputs

- Standard features include 5 inputs (4 HD/SD-SDI, 1 DVI-D) and 3 outputs (2 HD/SD-SDI, 1 DVI-D).

HD	1080/59.94i, 1080/50i, 1080/23.98PsF, 1080/24PsF, 720/59.94p, 720/50p
SD	480/59.94i, 576/50i

MultiViewer display functionality comes installed as standard

- The built-in MultiViewer can display up to ten image windows at one time on a single monitor, including program, preview, inputs, and more!



Audio Level Meter Display Function

- Embedded audio levels of SDI inputs can be displayed. (1 ch, 2 ch)



Bus Transition Functions

- Cut and Mix transitions are available through AUX bus and PinP bus.

Frame Synchronizers on All Inputs

- Frame Synchronizer is embedded in all inputs. This enables asynchronous video signals to be switched without glitches. (SDI-IN1 to 4 10 bit, DVI-IN 8 bit)

More Powerful Features

- 2 Switchable Up-converters. (SDI-IN3, IN4)
- Color Correction on SDI Inputs (SDI-IN1 to 4) for convenient matching of video sources.
- Dot-by-Dot feature on 4 inputs (SDI-IN1 to 4) enables insertion of SD images into HD frames with virtually no image distortion.
- 13 wipe patterns, plus PinP, Chroma/Linear Key, Aux Bus.

