

# Global Shutter Camera

## HDC-H15M1080GS

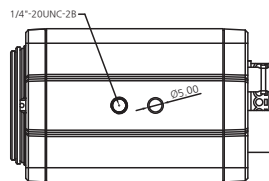
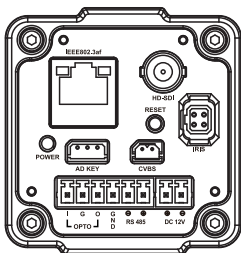
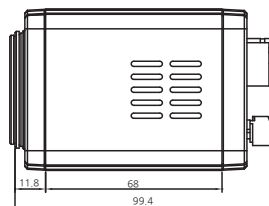
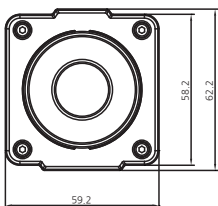


### Features

- 1/1.8" Sony Global Shutter CMOS Image Sensor
- Network, HD-SDI, EX-SDI, CVBS video output (Up to 1080p)
- Camera setup by OSD Menu
- C/CS mount lens & DC Iris lens applicable
- AD Key port for wired remote controller
- Remote control via RS-485
- Supports External trigger input and Strobe output
- Color Model : MB-HG15C, BW Model : MB-HG15M

### Dimensions

Unit : mm



MODEL	HDC-H15M1080GS
<b>CAMERA</b>	
Image Sensor	1/1.8" Sony Global Shutter CMOS Sensor
Total Pixels	2064 (H) x 1554 (V) = 3.21M Pixels
Recording Pixels	1920 (H) x 1080 (V) = 2.07M Pixels
Resolution	1080p/60(50)/fps, 1080p/30(25)/fps, 720p/60(50)/fps, 720p/30(25)/fps
Min. Illumination	MB-HG15C   Color(1/30s) : 0.3 lux, Color DSS(1/7.5s) : 0.075 lux MB-HG15M   BW (1/30s) : 0.02 lux, BW DSS(1/7.5s) : 0.005lux
Shutter Mode	Global Shutter
S/N Ratio	more than 50dB (AGC off)
Video Output	NETWORK, HD-SDI, EX-SDI, CVBS
<b>LENS</b>	
Lens	DC / Manual
Lens Mount	C/CS-Mount
<b>CAMERA FUNCTIONS</b>	
Camera Title	ID / Title / Zoom Ratio / System Message
Day & Night	MB-HG15C : Day MB-HG15M : Night
BLC	Off / On
ACE	Off / Manual(0~11 steps)
DNR	Off / 2D / 3D / 2D+3D(Auto / Low / Middle / High)
Defog	Off / Manual(0~11 steps)
HLC	Off / On
Motion Detection	Off / On (4 positions)
Privacy Mask	Off / On (8 positions)
Digital Slow Shutter	Off / x2 / x3 / x4 / x5 / x6 / x7 / x8 / x9 / x10 / x12 / x15
Gain Control	Off / On
White Balance	Auto / One Push / Manual / Indoor / Outdoor
Shutter Speed	1/30(25) ~ 1/10,000 sec
E.Zoom	Off / On(x1 ~ x6)
Digital Flip	Off / H / V / H&V
<b>NETWORK</b>	
Ethernet	RJ-45 (10/100BASE-T)
Video Compression	H.265, H.264, MJPEG
Resolution	1080p, 720p, 1024x576, 640x360, D1, 4CIF, VGA
Streaming Capability	Triple Streaming
IP	IPv4, IPv6
Protocol	TCP, IP, HTTP, DHCP, FTP, DNS, DDNS, NTP, ICMP, SNMP, SMTPE, UPnP, RTP, RTSP, ONVIF
Webpage Language	Korean, English
<b>GENERAL</b>	
Power Source	DC12V±10% / 802.3af PoE
Power Consumption	Max 550mA
Operating Temperature	-10°C ~ +50°C / 0% ~ 90% RH
Dimensions	59.2(W) x 62.2(H) x 99.4(D) mm
Weight	285g

[Note] Product are divided into Color model and BW model.