

# SC-04MHD

4CH Multiformat / Full HD Video Splitter

SC-04MHD, Digital Full HD Splitter, receives HD Analog (AHD, TVI, CVI) and/or CVBS video signals from Max. four cameras and displays them in various splitmodes and formats. In addition, it displays the video clearly in a Full HD monitor with 1920x1080p high resolution. With SeeEyes SC-04MHD, it is possible to amplify video signals to external devices such as DVRs via loop through output ports and also the remote control is available through RS-485 ports. It displays the date, time, the name of each channel, current status on the monitor as well as the channel loss.



## Features

- Multi-format quad screen splitter with 4 camera connection and real time display
- Display high-resolution video through high-speed image processing
- Various video input: AHD/TVI/CVI(~1080p), CVBS (NTSC/PAL)
- Various output resolutions (~1920x1080p)
- Various video output port (HDMI, 15Pin D-Sub, CVBS, Loop through output)
- Various split mode: 1, 2V, 2H, 4B, 4R, 4
- Auto sequence mode
- Alarm In / Out (4 In / 1 Out)
- Display date, time, name of each channel and current status
- RS-485 communication port for external device connection
- Various split mode: 1, 2V, 2H, 4, 4B, 4R
- Cropping function
- Auto sequence mode
- Display the date, time, the name of each channel, current status
- RS-485 communication port for external devices

[ SC-04MHD ]



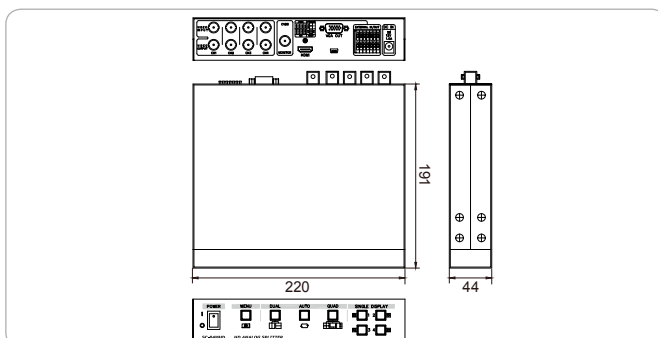
[ Rear ]



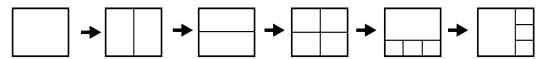
## Specifications

MODEL		SC-04MHD
INPUT	Input Resolution	AHD, TVI, CVI, CVBS
	Resolution	HD-Analog 1920x1080p 25/30Hz, 1280x720p 25/30Hz CVBS NTSC, PAL
Video	Output Resolution	LOOP OUT Same as input CVBS 720x480i 59.94Hz(NTSC), 720x576i 50Hz(PAL) 1920x1080p 25/30/50/60Hz, 1920x1080i 50/60Hz, HDMI 1280x720p 50/60Hz, 1024x768@60Hz, 1360x768@60Hz, 1600x1200@60Hz VGA 1920x1080p 60Hz, 1280x720p 60Hz, 1024x768@60Hz, 1360x768@60Hz, 1600x1200@60Hz
	Split Mode	1, 2V, 2H, 4, 4B, 4R
	OSD (On Screen Display)	Up to 16 characters (Alphabet and/or numbers)
	Input Power / Power Consumption	MAX. DC 12V / 650mA
External Interface	Alarm	Input: 4 (8P), Output: 1 (3P)
	RS-485	2P
LED Display	GREEN	In DUAL, AUTO, QUAD mode
Temperature / Humidity		0°C ~ +50°C / 0 ~ 80%
Case Material / Weight		Steel / 1.3kg
Dimensions (mm)		220(W) x 44(H) x 191(D)

## Dimensions



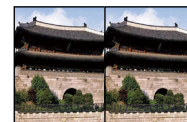
## Split Mode



## 2Cropping Mode



Full Mode



Crop Mode



Normal

## Connection Diagram

